



# Home-Generated Sharps Law - SB 1305 Information



# Home-Generated Sharps Law Enacted to Prevent This



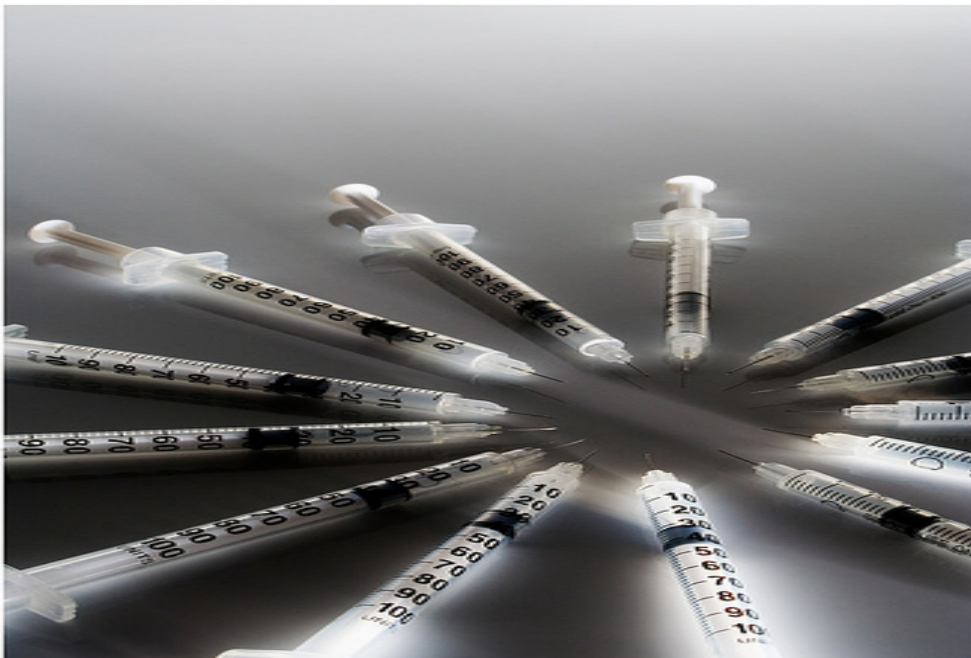
# What Are Home-Generated Sharps?

- Hypodermic Needles
- Pen Needles
- Intravenous Needles
- Lancets, and
- Other Devices Used to Penetrate the Skin with Medications



# Sharps Generated in California

- 486,000 People Self-Inject Insulin in California
- 355 Million Home-Generated Syringes Need Disposal options in California per Year



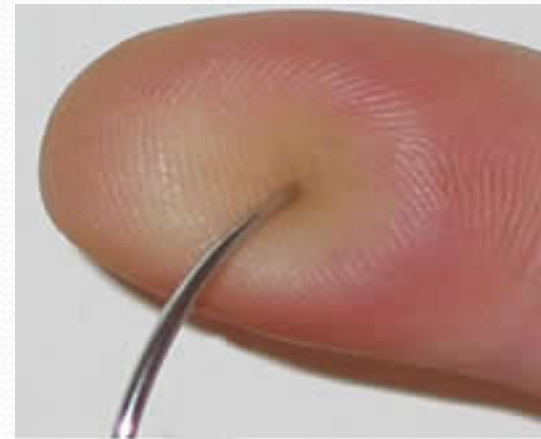
# What Else Are Sharps Used For?

- Allergies
- Hepatitis
- Multiple Sclerosis
- Arthritis
- HIV/AIDS
- Osteoporosis
- Cancer
- Infertility
- Psoriasis
- Diabetes
- Migraines



# Dangers of Getting Stuck with Used Sharps

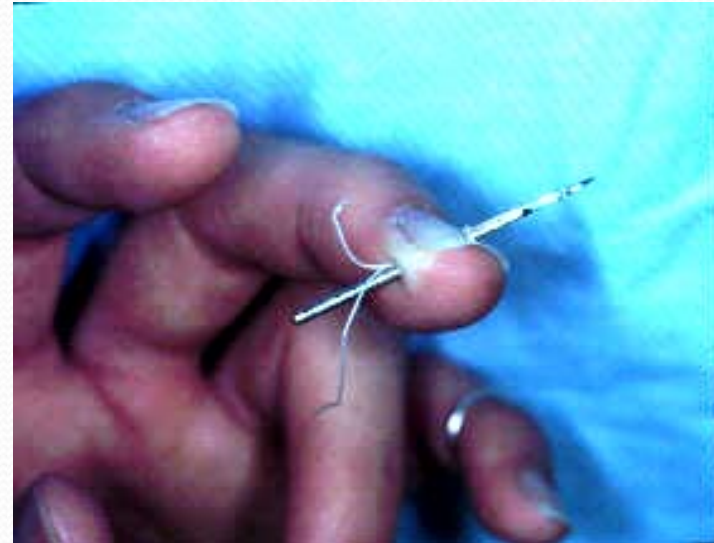
- Contract Hepatitis B and Hepatitis C
- Contract HIV/AIDS
- Get Injured from Needle Sticks



- Become Lodged in Recycling Equipment

# Dangers of Getting Stuck with Sharps

- Disease Prevention Measures Need to Be Purchased(Protective Clothing)
- Expensive for Post-Injury Testing & Counseling
- Painful If You Get Stuck



# SB 1305 - Sharps Law

Effective :

**September 1, 2008**

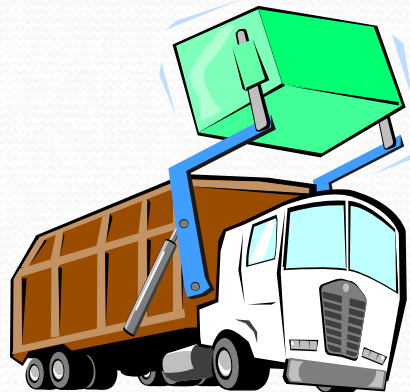


- Defined 'Home-Generated Sharps' Waste
- Home-Generated Sharps are *not* Medical Waste
- Requires Special Handling & Disposal of Sharps

# Home-Generated Sharps Disposal Ban

Sharps Can No Longer be Placed in:

- Trash Cans
- Recycling Containers
- Green Waste Containers



# Where Can You Dispose of Home-Generated Sharps Waste?

- Household Hazardous Waste Facility,
- Sharps Consolidation Point,
- Medical Waste Generator Facility, or
- Mail-back Containers

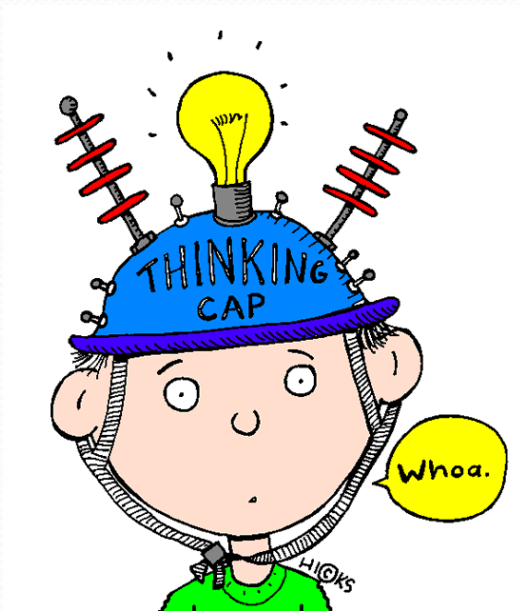


# Disposal Options

## Approved Sharps Mail-Back Containers



# Where Can the Public Find Out Where to Take Sharps?



[www.ciwmb.ca.gov/HHW/HealthCare/Collection/](http://www.ciwmb.ca.gov/HHW/HealthCare/Collection/)

James Cropper  
Integrated Waste Management Specialist

(916) 323-3416

[jcropper@ciwmb.ca.gov](mailto:jcropper@ciwmb.ca.gov)



**California**  
**Integrated Waste**  
**Management Board**

# QUESTIONS?

