



SB 707 (Newman) Textile EPR Legislation Factsheet

As amended July 3, 2024

Background:

As the fifth most common material found in single-family household waste streams, textiles are a high priority for landfill diversion as well as opportunity for innovative material management programs.¹ Industry efforts to create reuse and recycling options have proven expensive, siloed, and lacking transparency necessary for public investments. Textiles collected under the guise of recycling often end up in secondhand clothing markets. It is time for California, a top global waste generator, to take impactful actions to address textile waste.

Evidence of Problem:

The volume and diversity of textiles are immense, with complexities of equity and great potential for reuse, redesign, and a soil-to-soil circular economy.

Textiles are 3% of the total waste stream, the fifth most common material in residential and commercial waste streams.¹

Locally funded pilot projects in LA estimate textiles comprised 6% of the total commercial waste stream with an average of 71,000 tons landfilled annually.²

Thrifts, charities, and other collectors face the cost-burden of sorting unusable textiles into recycling.³

Textiles accumulate in secondhand clothing markets, such as Chile and Ghana, causing detrimental environmental damage.

Addressing the Problem:

The California Product Stewardship Council (CPSC) leads textile recovery pilot projects that work cooperatively to collect relevant and comparable data to make recommendations for state and local textile programs.

The public has already funded fiber recycling infrastructure through carpet and mattress stewardship fees, and many of the same recyclers are ready to receive textiles sorted to specifications.²

Local governments have already attempted to include textiles in curbside programs, but the cost and logistics are too burdensome and separate collection programs rely heavily on thrifts.

Textiles at MRF's are considered a costly contamination as they absorb, tangle, and combust when mixed with hard plastics.

Textile Policy Options:

California has a history with EPR and experiences with oversight and enforcement.

Eco-modulated fees are not a tax, they provide convenient access to the services in the Plan and reported publicly.

A textile EPR program will support services at thrifts, collectors, sorters, alteration and cleaning businesses.

EPR program operators can provide brands with flexibility to support established textile circularity programs and assist with meeting sustainability goals.⁴

The bill was amended to extend the timeline, transparent reporting, and enforcement tools and allow some chemical recycling.

The bill sponsor, CPSC, has a coalition letter with 100+ endorsements and growing.⁵

1. CalRecycle (2020). 2018 Disposal-Facility-Based Characterization of Solid Waste in California.
2. [City of Los Angeles \(2022\). Textile Recovery Pilot Project Report.](#)
3. [End-of-life regulation is coming for fashion](#) - Vogue Business, 2/4/21
4. [CPSC Textile Recovery Policy Report](#) and [One-Page Summary](#) - STRAC, 12/15/21
5. <https://www.surveymonkey.com/r/supportSB707>



Figure 1. Some 59,000 tons of unwanted clothing arrive in Chile each year from places like Europe, Asia and the United States. A fire at a dumping ground near the Paso de la Mula favela, in Alto Hospicio, Chile. [NY Post Article](#)



Figure 2. Some 15 million used garments pour into Accra every week from the UK, Europe, North America and Australia, flooding the city's sprawling clothing market. An estimated 40 per cent are of such poor quality they are worthless on arrival and end up dumped in landfill. [ABC Article](#)

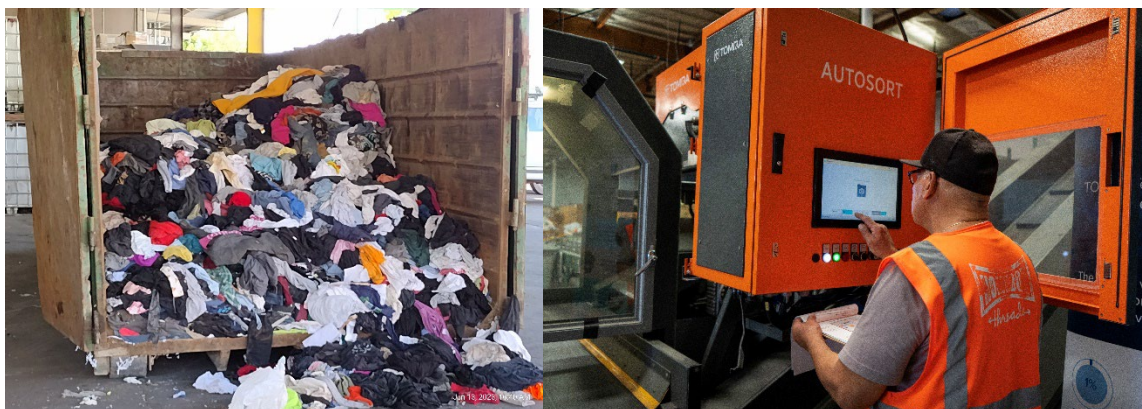


Figure 3. Almost 3 tons of textile waste was diverted from a recycling stream in San Jose in 30 hours for a fiber audit using handheld NIR devices. The Pilot in Los Angeles demonstrated high-capacity sorting necessary to manage a textile waste stream of 71,000+ tons annually.

For more information on the CA pilot projects and a full press list:
www.calpsc.org/cpsc-textilestewardship